

Port Definitions

PORTA:
 A1: sensor_dout
 A2: LEDy
 A3: en_13V
 A4: sensor_din
 A5: IO_POWER
 A6: manual_pullup
 A7: sensor_clk

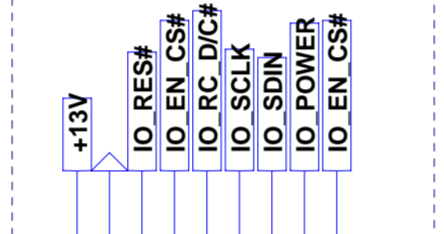
PORTB:
 B0: switch1
 B1: switch2
 B2: LEDg
 B3: LEDr
 B4: LEDusb

PORTC:
 C1: charge_out
 C2: charge_in

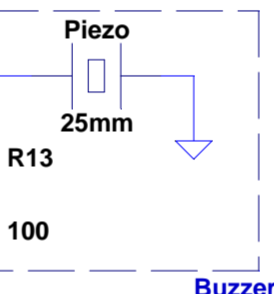
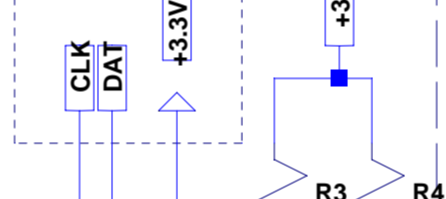
PORTD:
 D0: IO_SCLK
 D1: IO_SDIN
 D7: LEDnofly

PORTE:
 E0: IO_EN_CS#
 E1: IO_RC_D/C#
 E2: IO_RES#

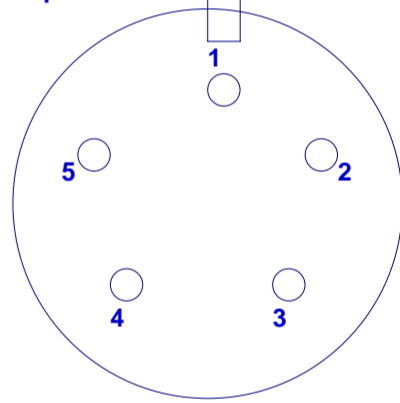
OLED Display
 Type OSRAM or UNIVISION



EEPROM 24LC515



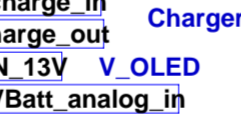
Fischer Connector 5pin



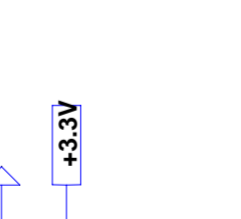
pin1: V_charge
 pin2: Reset
 pin3: TXD
 pin4: RXD
 pin5: GND

External connector view from outside

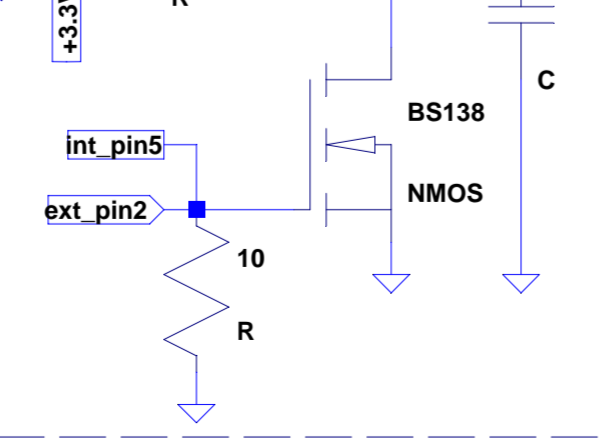
Charger



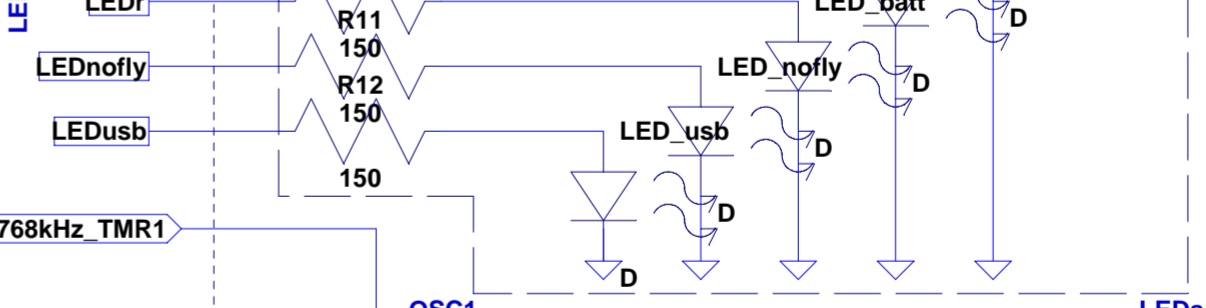
Switches



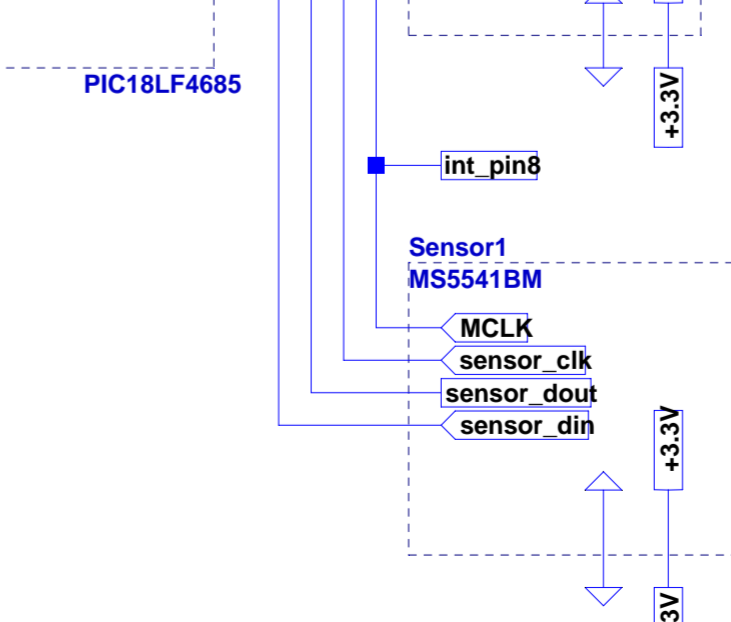
Reset



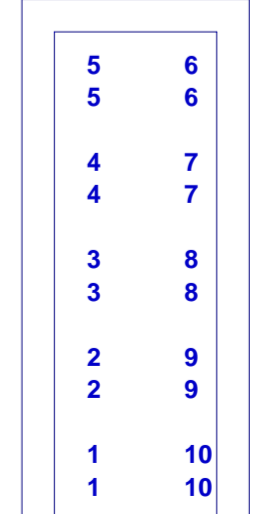
LEDs



Sensor-Interface



Every signal is on two pins of the 20pin connector.
 Type: DF17C3.0-20DS



Internal connector View from above